

**SPRING**  
**2019**



STEPHEN BAILEY: OUR KID, PHOTO: STEVE ULLATHORNE - SEE PAGE 14





# THE CORE

theatre solihull



2019  
SPRING  
season

**GIVE THE GIFT OF A GREAT NIGHT OUT!**

# THE CORE EXPERIENCE!

What a packed season the Autumn has been, and it's not over yet. Although the Spring season is just around the corner, our pantomime is just taking off and we are delighted to be partnered this year by Little Wolf Productions, an award-winning company who usher us into a new era of panto in Solihull with **Sleeping Beauty** which opens on Friday 14 December.

With plenty of **gift ideas** for family and friends, we highly recommend giving tickets as gifts as everyone looks forward to a night out and our Box Office team pride themselves on having a show to suit everyone from 3 to 103! Take a glance opposite and don't forget Valentine's Day, Mother's Day and Easter are just a few weeks away.

Spring 2019 will be the season of '**taking part**' at this venue, with plenty of new opportunities for all ages, why not try our new Monday morning **Gentle Yoga** class to wake up your week, join our **Community Choir** on Thursdays at lunchtime. For young people we have a new **Saturday Art Club** in the Courtyard for ages 8 - 14 years or get your whole family booked up for our very first **Solihull Bookfest**, from the organisers of the popular Bournville Bookfest, which attracts the very best names in family literature and all things books (see page 13).

Solihull's Core Theatre is firmly established as a place to see and do a whole wealth of things and there's never been a better time to start than right now.

For full information on all that we do, visit [www.thecoretheatresolihull.co.uk](http://www.thecoretheatresolihull.co.uk) or call **Box Office** on **0121 704 6962** between 9.30am - 3pm Monday to Saturday (10am Weds).

*Lawrence Smith.*

**Lawrence Smith**  
Theatre Manager

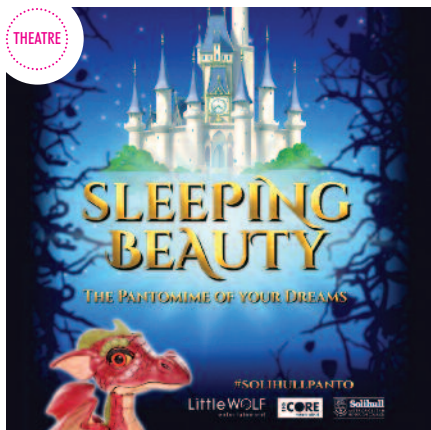
Cover images:  
Stephen Bailey - Page 14  
From top to bottom:  
Sindhu Vee - Page 16  
Dan Snow - Page 14  
Leitia George - Page 6  
Jack Lane - Page 8



## CONTENTS

<b>JANUARY</b>	<b>4 - 7</b>
<b>FEBRUARY</b>	<b>7 - 11</b>
<b>BOOKFEST</b>	<b>13</b>
<b>MARCH</b>	<b>11 - 16</b>
<b>APRIL</b>	<b>16 - 19</b>
<b>MAY</b>	<b>19 - 22</b>
<b>JUNE</b>	<b>22 - 24</b>
<b>JULY - AUGUST</b>	<b>24 - 26</b>
<b>FORTHCOMING</b>	<b>26</b>
<b>ENCORE</b>	<b>27</b>
<b>WORKSHOPS</b>	<b>28 &amp; 29</b>
<b>&amp; CLASSES</b>	
<b>SATURDAY ART CLUB</b>	<b>30</b>
<b>BOOKING &amp; SEATING</b>	<b>31</b>
<b>GALLERY</b>	<b>32</b>

THEATRE



**FRI 14 DEC - SUN 6 JAN,**  
VARIOUS TIMES: SEE WEBSITE

## **SLEEPING BEAUTY - THE PANTOMIME OF YOUR DREAMS**

**NEW!**  
**RELAXED  
PERFORMANCE**  
**FRI 4 JAN**

Inside Bromwich Castle the royal family are preparing for the Christening of Princess Rose until wicked fairy Carabosse steps in to ruin their happiness. With daring duels, doting dragons, lavish costumes and bucket loads of laughs this new era in Solihull pantomime is presented by award-winning Little Wolf Productions. A range of prices and start times, plus the NEW! Relaxed Performance on Friday 4 Jan for those whom the regular theatre trip can be challenging.

**RUNNING TIME:** APPROX. 2HRS 30MINS, INCL. INTERVAL **TICKETS:** VARIOUS

THEATRE



**WED 16 JAN, 7.30PM**

## **PAUL JONES AND DAVE KELLY ACOUSTIC DUO**

The Blues is perhaps more popular today than it has ever been. Young musicians still cut their teeth on its enticing, 12-bar appeal.

The Blues Band, Paul Jones and Dave Kelly go way back into the traditional Blues. As well as their own material, they'll perform the greats, from Howling Wolf, John Lee Hooker through to Sonny Boy Williamson in this acoustic duo show. Superb Blues vocals, harmonica plus guitar virtuosity have elevated this pair into the higher echelon of international Blues performers.

**RUNNING TIME:** TBC **TICKETS:** £22

THEATRE



**FRI 18 & SAT 19 JAN, 7.30PM & 2.30PM**

## **GO AND PLAY UP YOUR OWN END - IN CONCERT**

20 years ago, the stage show opened in Solihull to huge success, playing right around the Midlands region. To mark the anniversary, this version will be much like the original version with the much-loved songs, featuring members of the cast from various runs of the show, plus many key dramatic scenes will be performed in full.

Malc and Don are joined by West End Musical star Dave Willetts. If you loved the original show, then you'll love the concert. If you've never seen it, then you're in for a treat!

**RUNNING TIME:** APPROX. 2HRS, PLUS INTERVAL  
**TICKETS:** £22



THEATRE



WED 23 JAN, 7.30PM

## THE SYD LAWRENCE ORCHESTRA

Syd Lawrence formed the UK's most successful and longest running Big Band in 1967 performing on TV shows like *The Royal Variety performance*. With weekly Radio 2 broadcasts, albums and tours with Tony Bennett, Matt Monro, Frankie Vaughan added to their gravitas.

For the last 20 years the Orchestra has been led by virtuoso trombonist Chris Dean performing shows regularly around England and Germany. Tours of Brazil and Holland, Belgium and Monaco have kept the band at the top of the big band world.

**RUNNING TIME:** APPROX. 2HRS **TICKETS:** £24

THEATRE



THU 24 JAN, 7.30PM

## THE BILLY FURY YEARS

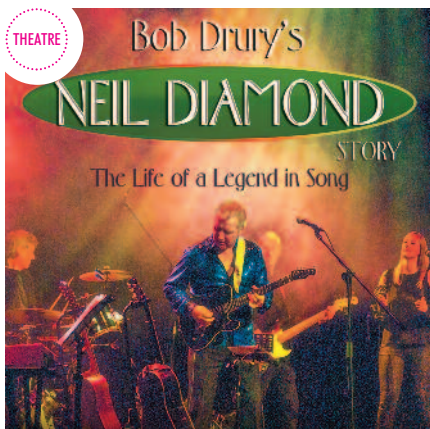
Hailed as "the best Fury since Fury", Michael King and his fantastic collection of musicians take you on a journey through the musical career of Britain's best loved rock'n'roll legend.

Two hours of Billy Fury's greatest hits delivered live in true Fury style. Further enhanced by audio and video effects plus various costume changes depicting his ever changing image.

"King captured fully the sound, gestures, mannerisms, even the physical appearance of arguably Britain's greatest Rock and Roll singer" **The Beat Magazine**

**RUNNING TIME:** APPROX. 2HRS, INCL. INTERVAL **TICKETS:** £20

THEATRE



FRI 25 JAN, 7.30PM

## THE NEIL DIAMOND STORY

Bob Drury returns with his band following his previous sell out. Prepare to be blown away by Bob's vocal likeness to Neil Diamond and the show that includes favourites; *Cracklin' Rosie*, *America*, *Love on the Rocks*, *Play Me*, *Hello Again*, *Forever in Blue Jeans*, *Beautiful Noise*, *I'm a Believer*, *Red Red Wine* and of course *Sweet Caroline*.

A fantastic evening is guaranteed as the man, his band and the songs ensure Bob Drury's show is an absolute 'must see' for any Neil Diamond fans!

**RUNNING TIME:** APPROX. 2HRS 20MINS, INCL. INTERVAL  
**TICKETS:** £21 - LIMITED SEATS REMAIN

THEATRE



SAT 26 JAN, 7.30PM

## R.E.S.P.E.C.T TO ARETHA

Life-long Aretha Franklin fan and power-house vocalist, Letitia George stars in this heartfelt and uplifting dedication to the Queen of Soul.

Aretha rose from church gospel singer to international stardom at a young age and is widely accepted as the finest female soul singer ever. Hits include; *A Natural Woman*, *Say a Little Prayer* and *Respect*.

Letitia gave breath-taking performances on series 4 of *The Voice*, and has forged a reputation as a hardworking soul singer that truly captures Aretha's spirit.

RUNNING TIME: TBC

TICKETS: £24

THEATRE



TUE 29 JAN, 7.30PM

## A VIENNESE STRAUSS GALA

World on Stage present A Viennese Strauss Gala recreating the romance of the Viennese festive season, recreating a bygone age of glamorous soirées and Strauss waltzes.

The show features highlights from some of the great Operettas of the Strauss family, Kalman and Lehar; including *Die Fledermaus*, *The Merry Widow* and many more.

The European Orchestral Ensemble will accompany four Soloists from major Opera companies in a cleverly staged, choreographed and authentically costumed performance.

RUNNING TIME: APPROX. 2HRS

TICKETS: £21

THEATRE



WED 30 JAN, 7.30PM

## GAELFORCE IRISH DANCE

Gaelforce Dance, the celebration of Irish dance, music and song, has dynamically tapped its way into millions of hearts worldwide since 1999 in over 30 countries.

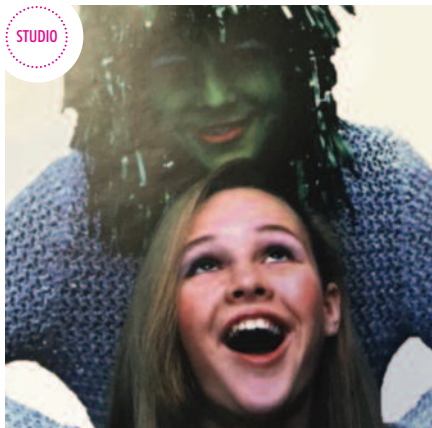
The story of forbidden love plunging their community into a cauldron of hate. The lovers tale of passion and tragedy is expertly woven with intricate choreography, thundering rhythms an innovative elements that regularly bring audiences to their feet.

A perfect mix of traditional and contemporary Irish dance and a perfect gift idea.

RUNNING TIME: APPROX. 2HRS

TICKETS: £22

STUDIO



**FRI 1 & SAT 2 AND FRI 8 & SAT 9 FEB,**  
VARIOUS TIMES

## **GOLDOCKS AND THE THREE MARTIANS**

Combining traditional pantomime elements with space age excitement and original humour the show is presented by local mixed aged group Harlequinade. When Goldilocks goes into the woods, she doesn't find the three bears but ends up on a spaceship to Mars... how on earth did that happen and how does she get back! Containing fabulous fun and silliness this lighthearted show in the ground floor Studio space is suitable for all, with popular songs for young and old!

**RUNNING TIME:** 2HRS, PLUS INTERVAL

**TICKETS:** £12 ADULTS, £10 CHILDREN (SUITABLE AGE: 4+)

THEATRE



**SAT 2 FEB, 7.30PM**

## **BUDDY HOLLY'S WINTER DANCE PARTY**

Four talented West End artistes pay tribute to Buddy Holly, Big Bopper, Richie Valens & Dion Di Mucci. Along with live band The Counterfeit Crickets they'll recreate the last tour given by those performers at The Surf Ballroom, Iowa U.S.A in a two-hour uplifting show that will have you foot tapping and singing along!

With all the hits... *Heartbeat*, *Blue Days Black Nights*, *Bo Diddley & True Love Ways* as well as *La Bamba*, *Chantilly Lace* and *Run Around Sue* to name but a few... pure Rock'n'Roll at its best!

**RUNNING TIME:** APPROX. 2HRS 30MINS **TICKETS:** £19 (£18 CONC.)

THEATRE



**THU 7 FEB, 7.30PM**

## **THE GIRL FROM TIGER BAY THE SHIRLEY BASSEY STORY**

The Girl from Tiger Bay tells the unique story of Dame Shirley Bassey's incredible magical career spanning 65 years. This 'rags to riches' tale is an epic musical show from the back streets of Cardiff to Monte Carlo. Features stunning dancers and replica costumes. Using powerful live performance, narrative and footage, this is a truly unmissable show.

Enjoy songs like, *Big Spender*, *Goldfinger* and *Diamonds Are Forever* performed by Joanne Copeman who has performed in over 25 countries so far.

**RUNNING TIME:** 120MINS, INCL. INTERVAL **TICKETS:** £17



STUDIO



TUE 12 FEB, 2PM

## KEITH SLATER'S 60s CELEBRATION

Join this two hour afternoon musical journey through one of the most inventive and influential decades of our times presented by musician Keith Slater.

The 'Swinging Sixties' is a show full of classic songs from The Beatles, The Searchers, The Beach Boys, Peter Sarsted and many more. From Rock 'n' Roll to psychedelia, from segregation to the summer of love and beyond.

More than just a man with his guitar, the show uses screen projection for a musical and visual reminder of life back in the day when Britain was swinging!

**RUNNING TIME:** APPROX. 2HRS **TICKETS:** £12

THEATRE



TUE 12 FEB, 7.30PM

## DAD'S ARMY RADIO SHOW

Based on the classic BBC sitcom by Jimmy Perry and David Croft performed by David Benson and Jack Lane, together they play 25 characters in this brilliant staging of three classic radio episodes based on favourite scripts from the original TV series.

The quintessential sitcom, won the 'Best One-liner' accolade in a poll of comedians for those immortal words *"Don't tell him, Pike"* and great feat of vocal impersonation are used by these two experienced actors in this nostalgic reminder of fabulous comedy.

**RUNNING TIME:** 100MINS, PLUS INTERVAL

**TICKETS:** £18

THEATRE



THU 14 FEB, 7.30PM

## SOMEONE LIKE YOU: THE ADELE SONGBOOK

Someone Like You: The Adele Songbook is a stunning live concert performance, celebrating the music of one of our generations finest singer-songwriters.

Handpicked by Adele herself on Graham Norton's *BBC Special*, Katie Markham leads a 5-piece band through Adele's hits in this successful show. From powerhouse vocals, through to an intimate acoustic section. Songs from her albums 19, 21 and 25 with songs like *Chasing Pavements*, *Set Fire to the Rain*, *Someone Like You*, *Hello*, *Skyfall* and more.

**RUNNING TIME:** 140MINS, INC. INTERVAL

**TICKETS:** £21



THEATRE



SUN 17 FEB, 7.30M

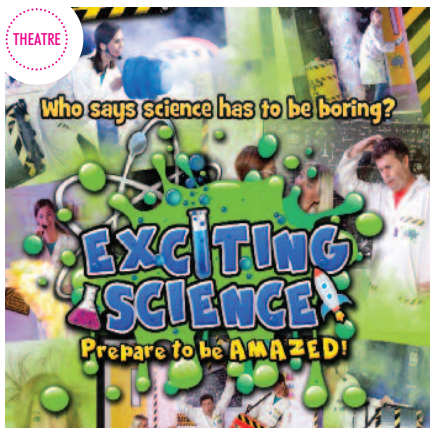
## VENUS VOICES & MAGIC VOICES IN CONCERT

Join both Venus Voices and Magic Voices Contemporary Choir, as we present an evening of iconic and unforgettable hits from the Stage and Screen to Popular songs and classics!

We shall feature guest soloists from across both our choirs of over 100 singers. With Musical Director Andrew Randall and Piano Accompanist Andy Rumble. We are very excited to perform for you this evening and we hope you enjoy our show!

TICKETS: £8.50

THEATRE



WED 20 FEB, 11AM

## EXCITING SCIENCE SHOW

This brand new, exciting and educational show will amaze and astound all ages from 4 years and up.

Featuring silly, fun, factual Science experiments, it's the perfect way to engage the mind and imagination during a dull and boring half term holiday!

Step into their 'shock - hazard - danger zone' in this mix of learning and laughter... a show full of wiz, bang, pop... and splurt!

RUNNING TIME: 1HR 35MINS, INCL. INTERVAL

TICKETS: £10 (SUITABLE AGE: 4+)

THEATRE



THU 21 &amp; FRI 22 FEB, 7.30PM

## LET'S HANG ON

Discover how four New Jersey boys from the wrong side of the tracks invented their own sound, wrote their own songs, and became one of the biggest pop sensations of all time!

The story - the music - the sound... it's the soundtrack to many lives and remains as popular now as ever. Both shows in 2017 sold out so early booking is recommended.

Let's Hang On gives you it all in this remarkable live production - so book your tickets now and find out why audiences are leaving saying "Oh, What a Night!"

RUNNING TIME: 2HRS, PLUS INTERVAL

TICKETS: £24

STUDIO



## SAT 23 FEB, AT THE CORE SOLIHULL FAIRTRADE CAKE OFF 2019

Annual public cake competition with a Fairtrade twist!

Open to adults and children. Get baking and entering in this popular Solihull Fairtrade baking competition which includes the final of the Schools' Bake Off Competition.

More details and link to entry form on  
[www.solihull.gov.uk/fairtrade](http://www.solihull.gov.uk/fairtrade)



THEATRE



SAT 23 FEB, 7.30PM

## A NIGHT AT THE MUSICALS WITH KARL LOXLEY

Karl shot to recent fame from appearing on the hit TV show *The Voice* singing the famous opera aria 'Nessun Dorma' to over 9 million viewers.

What followed were the coveted standing ovations from all the coaches, as Rita Ora declared him "Amazing!" Karl chose Sir Tom Jones and the rest is history. Karl now has 1 million YouTube hits, an album out in early 2019 and a devoted worldwide fan base of all ages - catch him on his 2019 Tour for a night of music everyone will enjoy.

[www.karlloxleytenor.com](http://www.karlloxleytenor.com)

RUNNING TIME: APPROX. 2HRS TICKETS: £21

STUDIO



THU 28 FEB, 8PM

## THE SHY MANIFESTO

A comedy drama concerning 17 year old Callum who is proud to be shy and he thinks you should be too, because what this noisy, crazy world needs is a bit more self-restraint.

The Shy Manifesto is a bittersweet comedy drama about a boy who is fed up of being told to come out of his shell. The show stars Theo Ancient (*Harry Potter and the Cursed Child*) and written by Michael Ross. Aimed at audiences aged 12+.

"...fun, sparky and full of ideas" - **The Stage** on Ross' previous show 'They Won't Kill You'.

RUNNING TIME: 1HR, NO INTERVAL  
TICKETS: £12

THEATRE

**THU 28 FEB - SAT 2 MAR, 2.30PM & 7.30PM**

## POPSTARS THE 90's MUSICAL

Packed with pop smash hits from 90s by artists such as The Spice Girls, Backstreet Boys, Britney Spears, Mariah Carey, MC Hammer and many more.

Mark is dumped by Shannon as she and her friends have formed a girl band and are out to win a talent show... but can they sing? Mark forms a boy-band but they'll need to learn to dance quickly! Great fun ensues as this boy band vs girl band musical provides a 90s jukebox musical spectacular performed by young talented members of SOSage Factory Theatre Group.

**RUNNING TIME:** 2HRS, PLUS INTERVAL **TICKETS:** £12 - £13 (CONC. AVAILABLE)

STUDIO

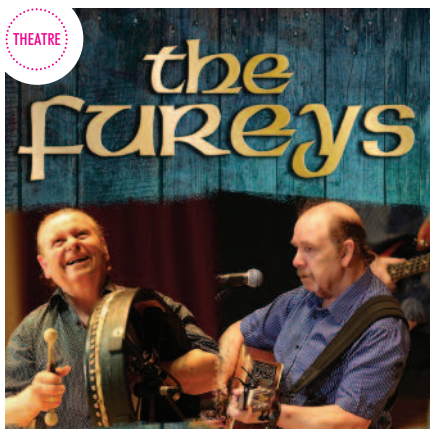
**SAT 2 MAR, 7.30PM**

## RAYMOND FROGGATT ACOUSTIC

In 1964 Raymond Froggatt formed a band and started to write music amongst his contemporaries, Bev Bevan, Steve Gibbons, Tony Iommi, Carl Wayne, Trevor Burton etc. With his band they were signed to Polydor and he started touring the world, performing at small venues like the Elbow Room in Birmingham to huge shows like Wembley Arena via The Icdrome in Tulsa USA. He returns to Solihull playing his acoustic set in the laid back Studio playing some fantastic songs that span over 50 years. Book early.

**RUNNING TIME:** 150MINS, INCL. INTERVAL  
**TICKETS:** £14

THEATRE

**WED 6 MAR, 7.30PM**

## THE FUREYS

After 12 previous concerts here, The Fureys return for another great night of music, song and stories guaranteed to sell out.

Hear them sing their timeless classics including *I Will Love You*, *When You Were Sweet 16*, *The Green Fields Of France*, *Red Rose Cafe*, *From Clare to Here*, *Her Father Didn't Like Me Anyway*, *Leaving Nancy*, *Steal Away*, plus songs from their CD *The Times They Are Changing*.

Their emotive songs stir many emotions...tears and laughter, sadness and joy.

**RUNNING TIME:** 2HRS, PLUS INTERVAL  
**TICKETS:** £21



THEATRE



THU 7 MAR, 7.30PM

## THE TAKE THAT EXPERIENCE

The Take That Experience have toured for over a decade wowing audiences everywhere with amazing voices, replica costumes and trademark crisp and precise dance routines beloved by fans of Take That.

All the classics from 90s to the present day including *Pray*, *Patience*, *Relight My Fire* and also featuring some of the best Robbie Williams hits like *Angels*.

The show makes a fabulous gift idea for fans of all ages.

RUNNING TIME: TBC

TICKETS: £22.50

THEATRE



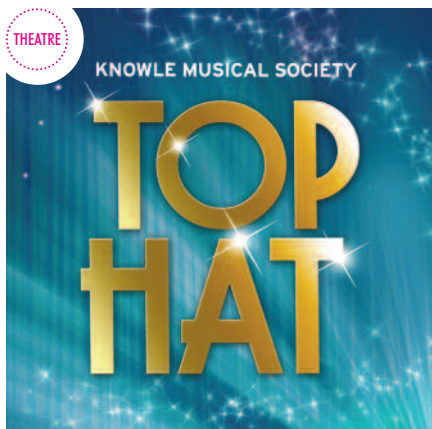
FRI 8 MAR, 7.30PM

## MATT FORD'S SALUTE TO SINATRA & THE KINGS OF COOL

Celebrating the coolest crooners. The hits of Frank Sinatra, Tony Bennett, Michael Buble, Bobby Darin, Matt Monro, Andy Williams and many more. Award-winning vocalist Matt Ford is widely regarded as the finest big band singer in the UK, broadcasting frequently with the BBC Big Band and performs at the BBC Proms. He's regularly toured with the John Wilson Orchestra under the direction of John Wilson. Fans of cool swinging standards, The Great American Songbook, or The Rat Pack will love this show.

RUNNING TIME: 2 X 50MINS, PLUS INTERVAL TICKETS: £20

THEATRE



TUE 12 - SAT 16 MAR, 7.30PM &amp; 2.30PM

## TOP HAT

Top Hat the musical is based on the classic film starring Fred Astaire and Ginger Rogers. Featuring music and lyrics by Irving Berlin with well known songs like *Puttin on the Ritz*, *Cheek to Cheek*, *Let's Face the Music and Dance* and of course *Top Hat White Tie and Tails*.

The 2011 Stage version won many awards including the Olivier Award for Best New Show.

This show, performed by Knowle Musical Society is planned to be one of the most lavish, lively spectacles to hit the Core Theatre.

RUNNING TIME: TBC

TICKETS: £19 (£17 TUE 12 &amp; SAT 16 MATINEE)

# SOLIHULL BookFest

## Save the date!

Join us for a brand new family festival  
of fantastic storytelling events

### Saturday 9th March

13



Nick Sharratt

at the Core Theatre  
and Solihull Library

featuring best-selling  
author-illustrators



Jonny Duddle

- Dr Who Scriptwriting • Draw Fantastic Comics •
- Nick Cope Big Sing-Along • Performance Poetry •

**SOLIHULL SHOWS ON SALE NOW!**  
**[www.thecoretheatresolihull.gov.uk](http://www.thecoretheatresolihull.gov.uk)**

Solihull BookFest is part  
of the award-winning  
Bournville BookFest  
family brought to you by

Busy  
Parents  
Network

Meet your favourite authors.  
Discover astonishing books.  
Interactive storytelling for the 0-12s.

THEATRE



WED 20 MAR, 7.30PM

**STEPHEN BAILEY: OUR KID**

Everyone's favourite 'guilty pleasure' stand-up comedy star, Stephen Bailey is back on tour with his brand-new show 'Our Kid' – a story full of Northern warmth, some working-class guilt and a bit of blue.

He's recently toured, performed a season at the Soho Theatre and supported Katherine Ryan's sell out tour.

His gossipy humour has made him one of the Britain's most exciting names in comedy at the moment and much in demand hosting and guesting TV shows and he's guest hosted on Virgin Radio and Gaydio.

RUNNING TIME: APPROX. 2HRS 20MINS, INC. INTERVAL

TICKETS: £14 (£11 CONC.) (SUITABLE AGE: 16+)

STUDIO



TUE 26 MAR, 2PM

**MALCOLM STENT IN THE AFTERNOON**

Malcolm Stent invites you to the Studio for an afternoon of music and mirth! His guests vary each show, sometimes singers sometimes guitarists etc. His stories will take you back and hopefully make you smile too.

Malcolm's warmth and local interest ensures his popularity never wanes and his audiences remain as loyal now as they were 25 years ago! Spend an afternoon with Malc and be home by teatime!

RUNNING TIME: APPROX. 100MINS

TICKETS: £12

THEATRE



WED 27 MAR, 7.30PM

**DAN SNOW - AN EVENING WITH THE HISTORY GUY**

Historian, TV Presenter and Author Dan Snow recounts anecdotes of memorable experiences from his very successful career. Known as 'The History Guy' Dan will also research and include historical facts (on digital screens) and stories relating to Solihull of interest to all ages.

His great love of history led to a hugely varied TV career including series on Battlefield Britain, Vikings, Armada and he's a regular on BBC's The ONE show and special events team. The show will conclude with a 20mins Q&A session.

RUNNING TIME: 2HRS 15MINS, PLUS INTERVAL

TICKETS: £25



THEATRE



THU 28 MAR, 7.30PM

## THE LINDISFARNE STORY

Tyneside group Lindisfarne had a string of unforgettable hits such as *Lady Eleanor*, *Meet Me on the Corner*, *Fog on the Tyne* and *Run For Home* establishing the band as the standard bearers for acoustic-based rock.

Former members Billy Mitchell and Ray Laidlaw tell The Lindisfarne Story from the very beginning and perform acoustic versions of the band's classic hits, sharing 'behind the scenes' stories illustrated with archive video and stills.

A delightful look back at the band, the music and the 70s decade.

RUNNING TIME: APPROX. 2HRS

TICKETS: £20

THEATRE



FRI 29 MAR, 7.30PM

## STARMAN - THE STORY OF DAVID BOWIE

From *Rebel Rebel* to *China Girl*, *Let's Dance* to *Young Americans*. *Ashes to Ashes*, *Life On Mars*, *Sound And Vision* to *Golden Years*... songs from all eras of David Bowie's celebrated career are performed to perfection in this highly charged show.

The finest musicians and singers combine with stage star Michael King plus big screen audio visual footage and various costume changes that take the audience on a highly entertaining, emotional and thought provoking musical celebration of his life and work.

RUNNING TIME: 2HRS, INCL. INTERVAL TICKETS: £22

THEATRE



SAT 30 MAR, 7.30PM

## THE SWINGING SIXTIES SHOW

From American Soul and Motown, to the British invasion of The Beatles, Kinks and The Rolling Stones, This show takes you on a visual and musical journey through the decade that invented of British pop culture, classic American soul and its iconic fashions.

Girl band The Heatwaves recreate the timeless Soul and Motown girl group hits, while The 3 Sixties recreate the decade that brought us Beatlemania, Mods and Rockers and the Psychedelic 'summer of love' to name but a few.

RUNNING TIME: TBC

TICKETS: £17

STUDIO

**SAT 30 MAR, 7.30PM****SINDHU VEE**

Edinburgh Comedy Award Best Newcomer Nominee 2018, Sindhu Vee embarks on a UK tour with her critically acclaimed and Edinburgh Fringe sell-out show, Sandhog taking place in the laid back ground floor Studio space.

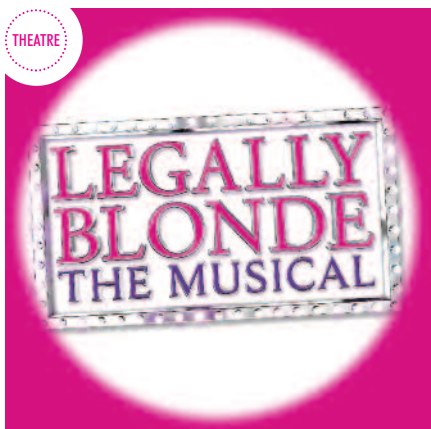
Her show Sandhog is a highly anticipated debut from the host of BBC4's *Comedy of the Week* podcast. She's also been seen on *QI* - BBC2, *Have I Got News for You* - BBC1 and Alan Davies *As Yet Untitled* on Dave, and Sindhu can be heard on Guilty Feminist podcast.

Early booking is recommended.

**RUNNING TIME:** TBC

**TICKETS:** £14 (£12 CONC.)

THEATRE

**TUE 2 - SAT 6 APR, 2.30PM & 7.30PM****LEGALLY BLONDE**

Another premiere presented by Peterbrook Players who presented the hilarious Spamalat in 2018. *Legally Blonde* is a sparkling and sassy musical show, based on the hit film.

The tale of a girl dumped by her boyfriend who declares she's far too 'itzy-ditzy' for him as he needs a serious intelligent girlfriend. She applies to Harvard determined to become serious and clever herself... but can she?

Funny, sassy and musical in equal parts this fun, modern classic musical is suitable for all ages.

**RUNNING TIME:** 3HRS, INCL. INTERVAL

**TICKETS:** £18 (£16 CONC. AVAILABLE TUE)

THEATRE

**MON 8 & TUE 9 APR, 2.30PM & 7.30PM****MEMORY LANE**

This fast moving, roller coaster of a journey through some of the greatest songs of the 50s, 60s and 70s. Over 160 amazing costumes, a touch of humour and performances rarely seen outside the 'West End' from this superb cast of singers and dancers.

Includes some of the greatest songs; Barry Manilow, Tom Jones, Frank Sinatra, Patsy Cline, Jerry Lee Lewis, Elvis Presley, Abba and many more. From the producers of 'Memories are Made of This', 'All Our Yesterdays', and 'Rolling Back the Years'.

**RUNNING TIME:** 2HRS, PLUS INTERVAL

**TICKETS:** £15 MATINEE, £16 EVENING

THEATRE



THU 11 APR, 8PM

## THE LIONEL RICHIE SONGBOOK

Fully endorsed by Lionel Richie, this brand-new production features a stellar line-up of world class musicians including Talon's own Jonny Miller and the fabulous Malcolm Pitt as the voice of Lionel Richie.

With hits like; *Easy*, *Say You Say Me*, *Dancing On The Ceiling*, *Three Times A Lady*, *Hello*, *All Night Long* and many more. Malcolm performed on ITV's *'Sunday Night At The Palladium'* with the iconic Lionel Richie himself and delivers a powerhouse and breathtaking performance. An ideal gift idea.

**RUNNING TIME:** APPROX. 150MINS **TICKETS:** £22.50

THEATRE



FRI 12 APR, 7.30PM

## THE BON JOVI EXPERIENCE

Whilst the iconic Bon Jovi are visiting the UK in 2019... not everyone will be lucky enough to get tickets! Here is your chance to treat friends and family to the next best thing!

This popular tribute show generates fantastic reviews from Bon Jovi fans across Europe and music critics alike. Catch this latest tour with new light show and fantastic live band to hear the back catalogue of one of the greatest live bands ever being performed in a celebration by one of the best tributes in the business.

**RUNNING TIME:** TBC  
**TICKETS:** £22

THEATRE



SAT 13 APR, 7.30PM

## SPRING SING! - YOU AND ME

Popular community choir Sing! Bentley Heath present their annual charity 'Spring Sing! - You and Me' concert with songs from artists including Queen, Abba, John Legend, Cliff Richard, Neil Diamond, The Carpenters and hits from the musicals *The Greatest Showman* and *The Lion King*.

The 80 singers, under the musical direction of Jane Perrins, will be accompanied by their own 5 piece backing band and as always, there will be a few fun surprises in this show fundraising for Admiral Nurses (specialist dementia nurses) and Parkinson's UK. There will also be a raffle on the night.

**RUNNING TIME:** APPROX. 90MINS **TICKETS:** £9.50



THEATRE



SAT 20 APR, 8PM

## THE KING ELVIS PRESLEY LIVES ON

Gordon Davis is known as one of the best Elvis tribute artist in the world after winning Images of the King in Memphis Tennessee 2012.

This success continued when Gordon won the European Championship in 2013. Now firmly established with an ever-growing UK and international fanbase.

Gordon brings the majesty of the voice and the electrifying power of Elvis' performance back to life. He'll perform with his live band singing well known songs such as *Blue Suede Shoes*, *Suspicious Minds* and many more.

**RUNNING TIME:** APPROX. 2HRS 20MINS **TICKETS:** £18.50

THEATRE



TUE 23 APR, 2.30PM

## THERE WAS AN OLD LADY WHO SWALLOWED A FLY

Presented by the team behind *How The Koala Learnt To Hug* and *The Witch's Bogey*, this magical new show by People's Theatre Company has been written by Stephen Lee.

Based on the classic nursery rhyme the show is especially for parents to enjoy with their children, so come and relive the delights of this most charming of tales with a feast of first class games, colourful animal characters and heart-warming family fun.

**RUNNING TIME:** 60MINS **TICKETS:** £12 ADULTS, £10 CHILDREN, £40 FAMILY TICKET (2+2), (SUITABLE AGE: 3+)

THEATRE



WED 24 APR, 2PM &amp; 7PM

## POP DIVAS LIVE

The best songs from all your favourite female stars in one fabulous fun-packed show – that's Pop Divas Live!

Little Mix will cast some *Black Magic* and of course Katy Perry will *Roar* as four enormously talented girls bring you up close and personal with great modern pop performers like; Meghan Trainor, Ariana Grande, Taylor Swift and Rihanna.

With dazzling choreography, state of the art videos and cool vocals, Pop Diva's Live! is suitable for all ages and will leave you wanting more! The best songs from all your favourite female stars in one fabulous fun-packed show – that's Pop Divas Live!

**RUNNING TIME:** TBC **TICKETS:** £15

THEATRE



FRI 26 APR, 7.30PM

## ANDY ABRAHAM'S NAT KING COLE SONGBOOK

Platinum selling recording artist Andy Abraham has performed to millions of fans around the world having shot to fame with his soulful voice as the runner up of *The X Factor* in 2005. He takes his voice to the next level as he celebrates the life and music of the legend that was Nat King Cole!

The Nat King Cole Songbook will see him perform hits such as *Unforgettable* and *Mona Lisa*. Andy's powerful vocals will pay great tribute to the voice that everyone around the world knows and loves.

RUNNING TIME: APPROX. 2HRS, INCL. INTERVAL

TICKETS: £24.50

THEATRE



TUE 30 APR - SAT 4 MAY, 2.30PM &amp; 7.30PM

## THE WEDDING SINGER

Wannabe rock star Robbie Hart is heartbroken when his fiancée jilts him at the aisle and bitterly decides to use his role as Wedding Singer to ruin other peoples weddings... until he meets pretty waitress Julia but finds she too is getting married!

Based on the hit Adam Sandler film, this show, set in the '80s reminds us of those days of big hair and greedy bankers. The Wedding Singer's sparkling new score brings the '80s back to life! Presented by Solihull On Stage.

Contains some strong language and adult themes.

RUNNING TIME: 180MINS, PLUS INTERVAL

TICKETS: £16 (£14 CONC. TUE &amp; SAT MATINEE), (SUITABLE AGE: 12+)

THEATRE



THU 9 MAY, 7.30PM

## THE OPERA BOYS

Operatic arias and classical favourites from *Nessun Dorma* to *Time to say Goodbye* are mixed with showstoppers from *Les Miserables* and *Phantom of the Opera*. With classical arrangements of modern day pop hits, all performed in The Opera Boys inimitable style.

With beautiful vocal arrangements, close part harmonies and a great humour, The Opera Boys delight audiences worldwide making classical music accessible and entertaining. With talent and showmanship they deliver a wonderfully entertaining show.

RUNNING TIME: 2HRS, INCL. INTERVAL

TICKETS: £20

THEATRE



SAT 11 MAY, 3PM &amp; 7.30PM

## SING-A-LONG-A THE GREATEST SHOWMAN

Experience The Greatest Showman film in the best way possible - with lyrics on screen to all join in. The live host introduces unique dance moves, our interactive prop bags, and practices your cheers & boos.

Fancy dress is encouraged and participation essential as YOU the audience rewrite the stars! Please note this is a screening of the movie and not a live stage show and the film has PG rating, children are very welcome.

**RUNNING TIME:** 160MINS **TICKETS:** £16 ADULT, £12 CHILD

THE FILM IS PG PLEASE SEE TEXT ABOUT AGE RANGE.

THEATRE



TUE 14 - SAT 18 MAY, 2.30PM &amp; 7.30PM

## JESUS CHRIST SUPERSTAR

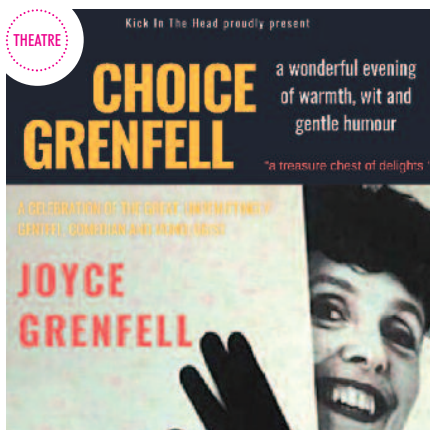
Andrew Lloyd Webber and Tim Rice's famous musical based on the Gospels is told entirely through song and explores the various relationships and struggles during the last week of Jesus Christ's life, through the eyes of Judas Iscariot.

The cast of Solihull Theatre Company, a talented AmDram group will bring this iconic rock opera right up to date with contemporary and innovative creativity but still featuring classic songs such as *Superstar*, *I Don't Know How to Love Him* and *Gethsemane*.

**RUNNING TIME:** APPROX. 160MINS, INCL. INTERVAL

**TICKETS:** £16 TUE, £17 WED - SAT

THEATRE



TUE 21 MAY, 7.30PM

## CHOICE GRENFELL

Joyce Grenfell, a supremely gifted comic performer was the best-loved female entertainer of her generation and is recreated in a wonderful evening of warmth, wit and gentle humour.

The show features some of the best of Joyce's delightful songs and monologues from *Stately as a Galleon* to *School Nativity Play*. Joyce is our guide for a delightful delve into some of her most delightful characters, ably accompanied by her trusted pianist. Stars Airlie Scott as Joyce and Andrew D. Brewis as William Blezzard.

**RUNNING TIME:** 1HR 30MINS, PLUS INTERVAL

**TICKETS:** £14



THEATRE



WED 22 MAY, 7.30PM

## FOREVER IN BLUE JEANS

Forever In Blue Jeans celebrates 23 happy and successful years 'On The Road'. A perfect feast of entertainment with superb singers, dancers and musicians playing the best in Country Music and Rock 'n' Roll. This big hearted show perform songs from Patsy Cline, Garth Brooks, Elvis Presley, Billy Ray Cyrus, The Mavericks, Tammy Wynette, The Carpenters & Carol King to hits from popular great Westerns.

The Red Hot Blue Jeans Band perform some memorable instrumentals and the show ends with a grand finale of the great Neil Diamond hit *Forever In Blue Jeans!*

RUNNING TIME: APPROX. 2HRS

TICKETS: £20

THEATRE



FRI 24 MAY, 7.30PM

## MALCOLM STENT & THE TIMONEERS

Although they later played with more members, the original Timoneers band was founded by just three members... Hearty Wakeman, Mike Cox and Malcolm Stent.

Playing a mix of their songs and your favourite sing-a-long pop songs all wrapped up in Malcolm's own brand of inimitable humour will send you home with your toes tapping and a huge grin on your face.

A lovely gift idea for music fans.

RUNNING TIME: 2HRS, INC. INTERVAL

TICKETS: £18

THEATRE



SAT 25 MAY, 7.30PM

## WHITNEY - QUEEN OF THE NIGHT 2019

A stunning celebration of the music and life of one of the greatest singers of our time. This award winning production features top musicians and a powerhouse performance in the spirit of Whitney which takes audiences on a musical rollercoaster ride through three decades of classic hits.

Classic hits such as *One Moment In Time*, *Run to You*, *Saving All My Love*, *I Will Always Love You*, and many more, this show beautifully remembers the most highly awarded female artiste in the world ever!

RUNNING TIME: APPROX. 2HRS, PLUS INTERVAL

TICKETS: £23.50

THEATRE

**WED 29 MAY, 12.30PM & 3PM**

## PIRATE PEARL & THE BIG BLUE MONSTER

Pirate Pearl lives aboard the good ship Mirabel with her crusty old shipmate, Grandpa Bert.

She is not a real pirate, but Pearl loves to imagine she is sailing the seven seas on a swashbuckling pirate adventure. One day, Pearl finds a stowaway aboard ship – a little blue monster! But little monsters grow into big, greedy monsters, and this one wants his DINNER! There is trouble ahead for Pirate Pearl. Silly, funny, small scale theatre making a delightful half term show for young landlubbers!

**RUNNING TIME:** 60MINS, NO INTERVAL

**TICKETS:** £10, (SUITABLE AGE: 3 - 7YRS)

THEATRE

**FRI 31 MAY, 2.30PM & 7.30PM**

## SWAN LAKE BY BALLET THEATRE UK

Ballet theatre UK have a fantastic following offering exquisite small scale ballet shows in local venues at a fraction of the price of the big city venues where audiences are often seated a long way from the action. They present one of the most enchanting love stories of all time Swan Lake with its famous 'Sugar Plum Fairy' and other much loved passages of blissful perfection.

Set to a stunning classical score this production will showcase new choreography by Artistic Director, Christopher Moore.

**RUNNING TIME:** 2 X 55MINS, PLUS 20MIN INTERVAL

**TICKETS:** £18.50/£17.50, £12.50 CHILD, (SUITABLE AGE: 5+)

THEATRE

**MON 3 JUN, 7.30PM**

## ROBERT MIZZELL & THE COUNTRY KINGS

Robert Mizzell was born in Louisiana and his early influences were Church Gospel but now lives in Ireland where he's a top Country artiste.

*Kick Ass Country* was his first major hit, but it was the song *Say You Love Me* that made him a household name in Ireland. More of his hit songs include; *Day Job*, *John Deer Beer*, *Louisiana Saturday Night* and *Wham Bam* to name a few. Two hours of non-stop entertainment proves why Robert Mizzell is a top country music artist. Joined by special guest Dave Sheriff.

**RUNNING TIME:** 2HRS **TICKETS:** £22.50

THEATRE



TUE 4 JUN, 7.30PM

## MALCOLM STENT'S SONGS OF PRAISE

When people come together and their sole intent is joy, something special happens. And that's what to expect from Malcolm Stent's Songs of Praise which returns this Summer following a great Christmas show!

This show will be full of great songs, hymns and band pieces from the West Midlands Fellowship Band of the Salvation Army (conducted by Bandmaster Charles King). The show is hosted by Malcolm Stent with his trademark wit and warmth and special guests. So sit back to enjoy the show or join in the opportunities to sing along!

RUNNING TIME: 2HRS INCL. INTERVAL TICKETS: £18

THEATRE



TUE 11 - SAT 15 JUN, 2.30PM &amp; 7.30PM

## SWEET CHARITY

Sweet Charity, the girl who wants to be loved so much that she loses who she is as she sings, dances, laughs and cries her way through her different romances.

This bright and sophisticated show, presented by talented local group Queensbridge Musical Theatre Society includes great songs like; *Big Spender*, *If My Friends Could See Me Now*, and *There's Gotta Be Something Better Than This*.

This musical show is a tender, poignant and funny tale of the adventures (and misadventures) of a lovely girl!

RUNNING TIME: APPROX. 120MINS

TICKETS: £16 (£14), (SUITABLE AGE: 14+)

STUDIO



WED 12 JUN, 2PM

## ROBERT HABERMANN - THE GOOD LIFE...TONY BENNETT

Award winning pianist Robert Habermann has developed a popular range of one man shows celebrating both the story behind the performer and the work itself.

Robert returns to Solihull with another of his popular daytime matinee shows where sits at his piano, in the laid back Studio and spends two hours singing, playing and nostalgically talking all things Tony Bennett. Great songs from several decades, his journey from singing waiter to joining Bob Hope on tour, to working with Amy Winehouse and Lady GaGa.

RUNNING TIME: 2HRS, INC. INTERVAL TICKETS: £12

THEATRE



FRI 21 JUN, 7.30PM

## MAD ABOUT THE MUSICALS

Taking you on a whistle stop tour from London's theatre land to the glitz of Broadway, Mad About The Musicals is back - celebrating the very best songs from the shows we all know and love!

Rodgers & Hammerstein, Andrew Lloyd Webber and Boublil & Schonberg, the talented cast of Mad About The Musicals provide fabulous vocals, costumes and a spectacular light show, to bring you the very best show of its kind in town!

"Outstanding!" **The Stage**

RUNNING TIME: TBC TICKETS: £22

THEATRE



TUE 25 JUN, 7.30PM

## SIMPLY THE BEST - THE TINA TURNER EXPERIENCE

This fully live energetic show charts the life and career of one of the worlds iconic performers. Full of hits like *Private Dancer*, *Nutbush City Limits*, *Proud Mary*, *River Deep Mountain High* and *Lets Stay Together*.

Featuring a seven piece band making this the only completely live touring tribute to this multi award winning legend. Powerful vocals, backing singers and fabulous professional dancers with electrifying dance routines make The Tina Turner Experience Simply the Best!

RUNNING TIME: TBC TICKETS: £25

THEATRE



THU 27 JUN, 8PM

## TALON - THE ACOUSTIC SHOW

Featuring many Eagles classics with breathtakingly beautiful acoustic arrangements, plus their own personal favourites in a brand new show for 2019.

Following the massive success of their critically acclaimed studio and 'LIVE' acoustic albums, 'Talon - The Acoustic Collection' is back with their most extensive tour to date. For those who appreciate great musicianship Talon are renowned for selling out quickly so book early.

TICKETS: £20



BRUETON  
PARK



WED 17 JUL, 7PM IN BRUETON PARK

## ROMEO & JULIET SHAKESPEARE IN THE PARK

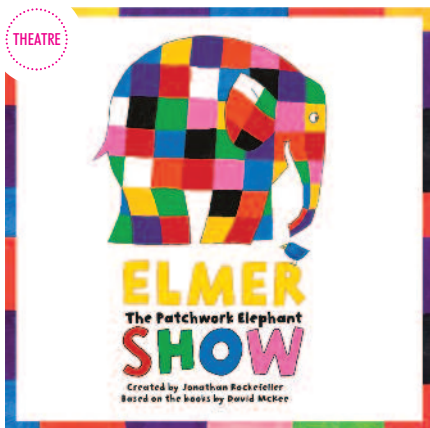
Step outdoors for a live outdoor adaptation of Romeo and Juliet by William Shakespeare. Heartbreak Productions specialise in high quality outdoor theatre in unusual spaces, castles and parks etc.

Romeo and Juliet will be given an intriguing twist without losing any of the authentic content that made it one of his best-known works.

Bring friends, picnic, your own seat/blanket and enjoy this talented cast performing a fantastic literary work.

Visit website or ask box office for full details.

THEATRE



TUE 23 & WED 24 JUL,  
11AM, 1.30PM, 2.30PM & 4.30PM

## ELMER THE PATCHWORK ELEPHANT

The classic tale of Elmer the Elephant who simply didn't want to be grey! This family show has been created for stage by Jonathan Rockefeller based on the books by David McKee.

There are five shows aimed at young families, with various start times to suit. What colour do you think Elmer will choose?

TICKETS: £14, £12.50 CHILD OR £50 FAMILY TICKET (2+2)

THEATRE



## MON 29 JUL - FRI 2 AUG THEATRE SUMMER SCHOOL

Summer Drama course in partnership with K22 Productions exploring the creative and performance potential of all children in a safe, fun theatre environment through drama, dance and music.

No prior experience needed to enjoy learning and working as part of this youth class aiming to help young people develop their imaginations, communication skills and self-esteem.

Boys and girls ages 8-16 work with actors, with a chance to participate in a show on the final day of the course.

COST: £130 PER COURSE - AGE 8-16 YEARS

BRUETON  
PARK



## WED 31 JUL - THU 1 AUG, OUTDOOR IN BRUETON PARK **GANGSTA GRANNY**

Step into Brueton Park for another David Walliams novel beautifully adapted for live outdoor performances, Gangsta Granny is the tale of a bored boy who discovers his kindly grandma was a former jewel thief. Together they hatch a plan to steal the Crown Jewels... what can go wrong!?

Bring your picnics, blankets/folding chairs etc to see this funny tale performed outdoors in the atmospheric park setting. Heartbreak Productions specialise in high quality outdoor theatre in unusual spaces.

Visit the website or ask box office for full details.

THEATRE



**THU 29 AUG, 2PM & 7PM**

## **THE LITTLE MIX EXPERIENCE 2019**

If you L.O.V.E. X Factors' Little Mix check out these four hugely talented girls paying tribute to one of the UK's finest Girl-Bands. Fab dance moves, replica costumes and fantastic vocals, this high-energy show is absolutely packed with all of Little Mix's greatest hits and suitable for all ages!

Featuring songs such as *DNA*, *Wings*, *Salute*, *Black Magic*, *Love Me Like You*, *Secret Love Song* and many, many more. They look like Little Mix, They Sound like Little Mix, they are "The Little Mix Experience".

**RUNNING TIME: 110MINS**

**TICKETS: £15**

26

## FORTHCOMING ATTRACTIONS

<b>30 AUG</b>	<b>MORGAN &amp; WEST MAGIC SHOW FOR KIDS (&amp; CHILDISH GROWN UPS)</b>	£10
<b>21 SEP</b>	<b>THE BEACH BOYZ TRIBUTE SHOW</b>	£20
<b>26 SEP</b>	<b>STARS OF IRISH COUNTRY SHOW</b>	£25
<b>2 OCT</b>	<b>SIMPLY RE:RED</b>	£TBC
<b>24 &amp; 25 OCT</b>	<b>WORLD FAMOUS ELVIS SHOW WITH CHRIS CONNOR</b>	£26
<b>26 OCT</b>	<b>AND FINALLY... PHIL COLLINS - TRIBUTE SHOW</b>	£20
<b>28 OCT</b>	<b>LEGENDS OF AMERICAN COUNTRY MUSIC - MULTI TRIBUTE</b>	£20

JUL · AUG

**Box Office 0121 704 6962**

# ENCORE

## WHERE FOOD GETS A ROUND OF APPLAUSE!

### Family trips and group bookings\*

Our café users love our great value prices and friendly service with a smile. We adapt our menu to keep ahead of demand with some great ideas and daily specials. So whether you're attending a show or not, we're always worth a visit for breakfast lunch or snacks.

For theatre trips, add an extra sparkle to your theatre treat by

pre-ordering a lunch, buffet or perhaps a decadent Afternoon Tea, before or after the show in Encore.

Encore offer group and party catering and venue hire in either the Studio\* or the spacious Courtyard Gallery\* for group or family celebrations, including children's parties, Christenings and funerals by arrangement.

\* Subject to availability.



### Corporate Catering

Encore also manage corporate events, meetings, staff training and briefing facilities in the Studio or Gallery or larger AGM meetings in our 336 seater theatre. Our busy and creative in house team can cook everything from working breakfast platters to evening curries!

FREE  
EVENT  
SPACE

### Ovations Bar - Celebrate in Style!

Our upstairs Ovations bar is tucked away in a peaceful corner on the first floor and has its own counter and servery, tables and toilets.

We can host your work or family event, leaving 'do', public event or meeting free of charge when you order your catering from Encore.

This could be an Afternoon Tea for members, a retirement party, reunions or other gatherings. Ovations is not private, but is a spacious area to meet, chat, make speeches or give someone a great send off... complete with delicious freshly made Encore catering and hot, cold or alcoholic drinks.

Contact the Catering Manager  
on 0121 704 6813 or 8636  
to discuss any events or orders.

GREAT  
GIFT  
IDEA!

CHILDREN'S  
AFTERNOON  
TEA  
ONLY £8



27



Join us at Encore next time you're in Solihull!

# WORKSHOPS, CLASSES & MORE

## A WIDE VARIETY OF CLASSES

Want to take up a new hobby or exercise in a friendly Group who enjoy a laugh?... look no further! Our classes take place in the Studio and are a chance to exercise, learn and meet new friends.

## NEW! SING SOLIHULL - COMMUNITY SINGING

There is no doubt that belting out a great song in harmony with others has an instant feel-good factor! Sing Solihull is a community choir that meets on Thursday lunchtimes in the Studio aimed at all ages and abilities to enjoy the benefits and well being of group singing.

Choral Director Anya Small leads this group who are supported by Solihull BID to create a Solihull choir that which will make public appearances from time to time. No prior knowledge or experience is required... just turn up!

1PM ON THURS, WEEKLY, FEE £5

## MONDAY CLASSES

NEW! GENTLE CHAIR YOGA 9.45 - 10.45AM

HATHA YOGA 11AM - 12PM AND ALSO

5.30 - 6.30PM WITH TUTOR MARIE KENNEDY

PILATES 12.15 - 1PM WITH TUTOR

NICOLA HOLMES

STEPPING OUT 1.30 - 2.30PM ARUNA KAILEY

## FRIDAY CLASSES

TAI CHI 9 - 9.45AM

WITH TUTOR JAN WILSON

HATHA YOGA 10.15 - 11.15AM

WITH MARIE KENNEDY

GENTLE CHAIR YOGA

11.30AM - 12.30PM

WITH MARIE KENNEDY

PILATES 12.45 - 1.30PM

WITH NICOLA HOLMES

## DECOPATCH WORKSHOPS FOR CHILDREN

Presented by Helen at Mindful Crafts, Decoupage - the art of layering patterns, transfers, fabrics, papers etc. onto new or used items can turn something plain into something wonderful!

Classes are during holidays and participants go home with a finished item.

ON 21 FEB & 17 APR BOTH 10AM - 12NOON  
COSTING £10 P.P. SEE WEBSITE FOR DETAILS

## CRAFT WORKSHOPS FOR ADULTS & FAMILIES PRESENTED BY MINDFUL CRAFTS

Tutor Helen will show you how to make fun felted Christmas items like gnomes.

NEEDLE FELTING ON DEC 15

COURSE FEE £25 PER SESSION 2 - 4PM

Further sessions with step-by-step instruction in needle felting take place in Spring 19 - look out for other courses too!

NEEDLE FELTING ON JAN 12 & APR 13

COURSE FEE £25 PER SESSION 2 - 4



## AND COURSES...

## NEW - SATURDAY ART CLUB! PRESENTED BY ART AT THE HEART CIC

Using a wide variety of art skills and learning new activities our aim is to guide children aged around 8 - 14 to explore, enjoy and express themselves through drawing, painting and making at The Core. They will develop visual vocabulary, emotional intelligence AND have fun! Ideal for those planning or taking GCSEs in Art subjects. Activities are delivered in 5 or 6 week blocks on a range of topics including art, fashion, illustration and drawing. Creative skills all help to increase young people's employability and make a welcome break from the rigours and stresses of traditional studying. Each block is pre-payable in advance. Please see future dates, content and prices on the website. See page 30.

SESSIONS 10AM - 12NOON IN COURTYARD GALLERY  
BOOK ONLINE OR VIA BOX OFFICE ON 0121 704 6962



# WORKSHOPS, CLASSES & MORE

## **THEATRE SUMMER SCHOOL 5 DAY YOUTH THEATRE COURSE**

You don't need previous experience or talent to enjoy learning and working on stage as part of a youth theatre class. Katch 22 work in education, theatres and cruise lines with young people developing their acting, stagecraft and other skills. It's great fun, exercise and a brilliant chance to work with professionals. See page 25.



**COURSE FEE: £130  
PER CHILD  
MON 29 JUL - 2 AUG**

## **LIGHT 52 PHOTOGRAPHY COURSES WITH RICHARD PEARCE**

Do you ever wonder what those knobs and dials are for, and how they could revolutionise your ability to take really great photographs.



Held in the Studio on Mondays at 6.45pm and Richard works with participants in a group and individual format.

For adults (age 18+) the content is designed to enable you to learn at your own pace and rotate around the year if you wish to complete all levels.

Occasionally there is an exhibition in The Courtyard Gallery open to course participants. See website for the course content at each level and dates or call Box Office.

**COURSE FEE: £90  
BEGINNERS COURSE: STARTS JANUARY 2019  
INTERMEDIATE COURSE: STARTS APRIL 2019  
ADVANCED COURSE: STARTS SEPTEMBER 2019**

## **ACTIVITIES IN LIBRARIES...**

### **FAMILY HISTORY COURSES FIRST STEPS IN FAMILY HISTORY (BEGINNERS)**

A 7 week course for complete beginners, explaining the process of researching your family tree from scratch, using records, indexes, census and websites.

**COURSE DETAILS AND PRICES SHOWN ON WEBSITE**

### **FAMILY HISTORY REFRESHER**

A 7 week course suitable for those who have had a break and want to kick start their research again. The course assumes you're familiar with records such as registers, census records etc and can research back to at least the early 1800s.

Covers topics like internet research, census substitutes, military records, DNA, family history and more. The fourth session is non-taught to enable progress with tutor support as needed.

### **NEXT STEPS IN FAMILY HISTORY**

A seven week course for more experienced learners. At Shirley Library.

**COURSE DETAILS AND PRICES SHOWN ON  
WEBSITE OR CALL BOX OFFICE**



# SATURDAY ART CLUB

**Our new Saturday Art Club at The Core is provided in association with Art at the Heart CIC - where art tuition is all about nurturing creativity.**

Using a wide variety of art skills and learning new activities our aim is to guide children to explore, enjoy and express themselves through drawing, painting and making: they will develop visual vocabulary, emotional intelligence AND have fun! Ideal for those planning GCSEs in Art subjects.

Art at the Heart use qualified art teachers with over 25 years experience, who recognise that children joining will be at different stages of development, and work in ways to support highly personalised development.



Most activities are delivered in 5 or 6 week blocks; the first block focused on drawing and developing observational skills. In 2019 the Club will explore a wide range of topics and themes through art, fashion, illustration and drawing.

## WHY JOIN THE ART CLUB?

As well as great artistic skills, the benefits of joining Art Club are far broader: Making art is fun! It supports positive mental health. Research shows that making art can reduce stress in children and adults of any age.

Art helps develop creativity and teaches 'thinking outside the box' develops cognitive learning and improves problem solving abilities. Visual and verbal communication and collaborative skills develop as a result of working in a small friendly group, with supportive like-minded new friends.



Confidence and healthy self-esteem builds through understanding ourselves and each other. These personal attributes and skills all help to increase young people's employability and make a welcome break from the rigours and stresses of studying.



**Saturday Art Club will run in blocks and is pre-payable in advance, please see future dates and prices.**

**BLOCK 2: JAN 5, 12, 19, 26; FEB 2, 9, 16**

**£84 PER CHILD IN A PRE-PAID BLOCK**

**BLOCK 3: MAR 2, 9, 16, 23, 30, APRIL 6, 13**

**£84 PER CHILD IN A PRE-PAID BLOCK**

**BLOCK 4: MAY 4, 11, 18, 25**

**£48 PER CHILD IN A PRE-PAID BLOCK**

**BLOCK 5: JUNE 8, 15, 22, 29; JULY 6, 13, 20**

**£84 PER CHILD IN A PRE-PAID BLOCK**



Art at the Heart CIC is an Arts Award Centre. Young people will have the option to work towards Arts Award. These Awards help young people to understand how the arts are embedded in society and to explore career pathways in the arts. Arts Awards help develop research and leadership skills. Arts Award Gold carries UCAS entry points.

Art can be a little messy so participants should wear old clothes or bring an old shirt to wear. Costs are inclusive of basic materials. There will be a small fee for portfolios and art packs are available to purchase if required.





## HOW TO REACH US

The venue adjoins Touchwood and the 'Orange zone' in Touchwood car park brings you up near the glass doors to Theatre Square. Taxi drop-off is no longer free - a minimum charge applies. High sided vehicles cannot enter Touchwood and should drop off and park elsewhere. The postcode for Sat-Nav for Touchwood Car park is B91 3GJ.

Solihull station is a 5-min walk away and bus and rail services run regularly to/from Birmingham and other areas.

Please follow us...



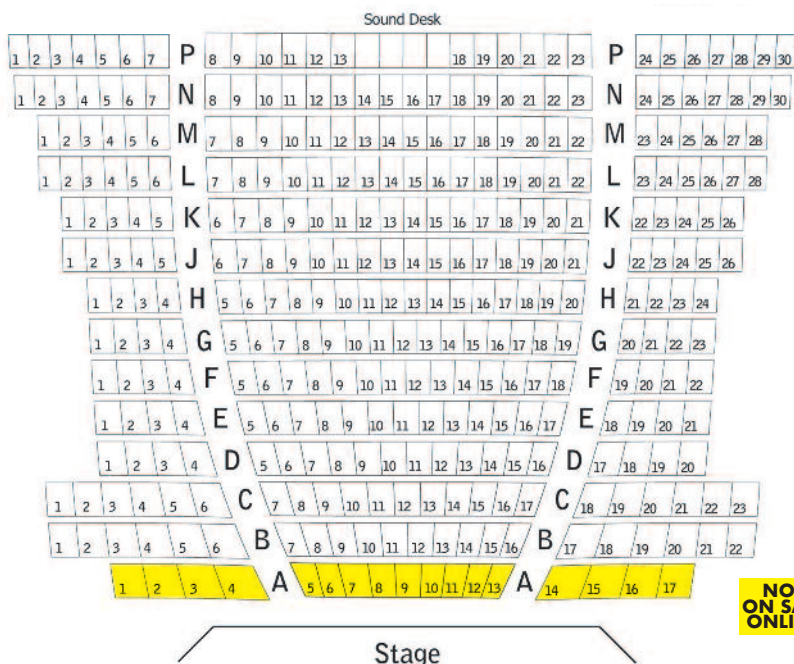
@coretheatresol

## BOX OFFICE & TICKETS

Box Office currently opens Mon - Sat 9.30am - 3pm (10am Weds). They re-open 90mins before curtain-up on show nights. Opening hours may change during 2019, please check the website or call for up to date info before making a special trip.

Call Box Office on **0121 704 6962** for tickets and reservations. Charges may apply but you can visit Box Office to avoid these. When booking by post please make cheques payable to Solihull MBC. Where £1.50 postage charge is not added, tickets will remain for collection. Most shows are on sale via our website at [www.thecoretheatresolihull.co.uk](http://www.thecoretheatresolihull.co.uk) where a transaction charge (currently £1.50) will apply. Tickets will remain at Box Office unless postal option is selected. Most shows have online seat selection except Studio shows where seating is unreserved.

**The Core Theatre, Box Office, Theatre Square, Touchwood, Homer Road, Solihull B91 3RG**





## COURTYARD GALLERY DIARY

WED 9 JAN - MON 21 JAN

**SWITCH: AN EXHIBITION BY TUDOR GRANGE  
ACADEMY'S A LEVEL STUDENTS**

WED 23 JAN - MON 4 FEB

**GAMMA: AN EXHIBITION  
BY THOMAS ROONEY**

WED 20 FEB - MON 4 MAR

**ART AT THE HEART:  
WORK BY ART STUDENTS**

WED 20 MAR - MON 1 APR

**CATHERINE DE BARNES ART SOCIETY  
& SOLIHULL SOCIETY OF ARTS  
SPRING JOINT ART EXHIBITION**

THERE WILL BE PAINTINGS, POTTERY,  
JEWELLERY AND CARDS FOR SALE

WED 3 - MON 15 APR

**SOLIHULL COLLEGE: I CAUGHT A GLIMPSE**  
AN EXHIBITION OF WORK BY HND PHOTOGRAPHY STUDENTS  
AT SOLIHULL COLLEGE & UNIVERSITY CENTRE

WED 17 APR - MON 6 MAY

**LINDEN ROAD ARTISTS: ATMOSPHERE**  
PAINTINGS FROM A DIVERSE GROUP OF MIDLAND ARTISTS

WED 8 - MON 20 MAY

**AN EXHIBITION BY RUNNING STITCH  
TEXTILE GROUP**

WED 22 MAY - MON 3 JUN

**COVENTRY WATERCOLOUR SOCIETY:  
SPRING EXHIBITION**

WED 5 - MON 17 JUN

**AN EXHIBITION BY THE CORE COLLECTIVE**

This is not a full listing, please see [www.thecoretheatresolihull.co.uk](http://www.thecoretheatresolihull.co.uk)  
for details of exhibitions and how to hire the Courtyard Gallery.

## Solihull Jets - Junior Embroiderers & Textile Students



Hold regular demonstrations & sessions for young  
people throughout the year. To find out more email  
[solihulljets@gmail.com](mailto:solihulljets@gmail.com) or **Deborah** on  
**07557 023245** for info.

## CRUNCH CRAFT GROUP - New Members Welcome

**Crunch** is a friendly group who meet in the **Courtyard Gallery** on **Wednesdays between 12 & 2pm**. Some members bring their own craft items, from drawing to cross-stitch, textiles to knitting and sit working enjoying the chat and camaraderie of like-minded crafty people, others work on combined items and help teach each other new skills using their own materials they bring with them.

**The Group is FREE** – just turn up. A great way to enjoy drawing and craft and make new friends.