

GUIDE TO THE RELAXED PERFORMANCE OF ROBIN HOOD – Thurs 2nd January 2020

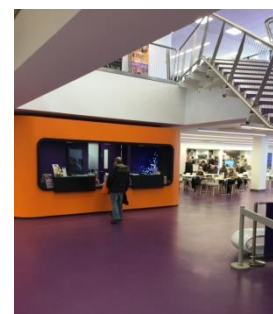
at The Core Theatre Solihull.



This guide is a visual resource for children and adults with an Autism Spectrum Condition or additional sensory needs when visiting the theatre. This resource is intended to help prepare any visitors for a new experience and to help them to become familiar with the surroundings. The Relaxed show is sponsored by Touchwood Shopping Centre.

Welcome to the Core Theatre in Solihull. This is a place for both children and adults to enjoy.

At the front there are 2 opening doors, suitable for wheelchair access; you will come through these doors into the wide foyer which has a purple floor. There could be lots of people when you come in, it can be noisy. There might be music playing.



In the foyer you will find the Box Office and the Courtyard Art Gallery. You can buy or collect your tickets from the Box Office or walk round the Gallery and look at the art work on the walls.

When getting your tickets you may have to stand in line with other people and wait your turn.

Here are our Box Office ladies and gentleman – Nick, Freya and Kirstie.



Sometimes there will be people selling toys and programmes in the foyer too. You might hear some announcements over the speakers to tell you when the performance is about to start.

You will see some Stewards wearing purple badges round their necks. Stewards are here to help you if you have any questions.

If you want to, you can walk around the gallery and see the pictures whilst you are waiting.

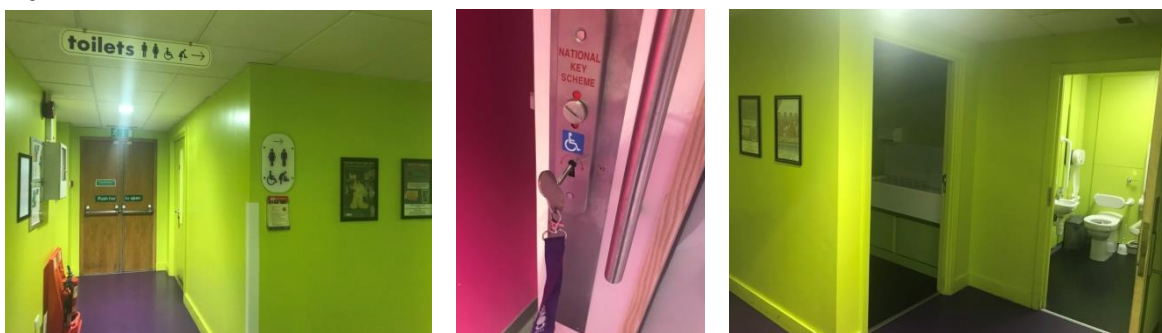


If the Library is open, you could go and look at the books if you wanted to.

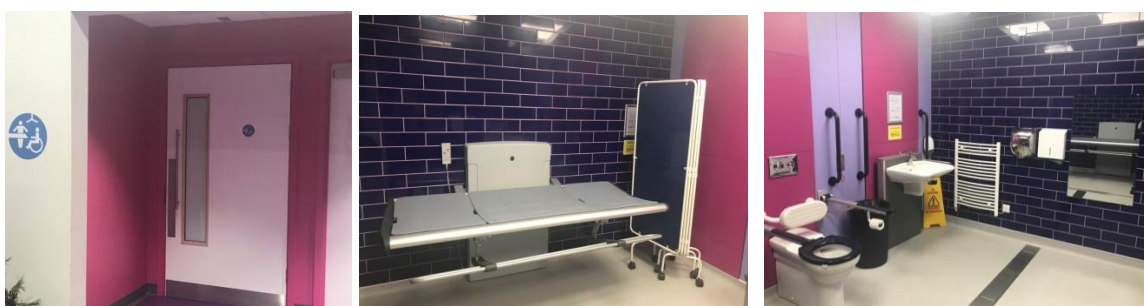
There is a Café bar where you can buy drinks and sweets if you want them. It may be crowded and noisy as lots of adults and children will be excited to see the show.



The toilets for males and females are also down the green corridor just near the bar. There are also toilets for wheelchairs and baby change. Just off the foyer there is also a Changing Places facility. You can get the key from Café Bar.



The changing places door is found just across the reception area near Connect.



Here is what the Changing places looks like inside.

Here is the main Theatre where you will go to see the show. It is a large room with a high ceiling and lots of seating. Wheelchair seating is on the front row.



The ground floor entrance is near the Cafe downstairs. Here are the doors. The booster seats are kept in this purple corridor and at the side of the stage, if you need one, you can choose one and take it to your seat to sit on.



The upstairs Theatre Doors for rows H-P are the central staircase, or you can go up in the lift if you like.

Here are the upstairs doors, you can find a booster seat just inside if you want one.



When you reach the entrance to the theatre, a Steward will look at your ticket and tell you where your seat is. The lights will be slightly darker in the theatre than in the corridor and foyer.

Look at your ticket. You can see where you need to go.



The letters and numbers on your ticket tell you where to sit.

You will see a letter at the end of each row and a number on the seat.



A Steward can help you find the way. If you are uncomfortable with where you are sitting, speak to a steward and they will be able to help. You can show them where you would like to be. If the seat that you would like to sit in is free and not reserved for anyone else, then you can sit there. If not, maybe you could choose another seat. We have made sure that there are lots available.



Here is the theatre from the front and looking from further back. There will be people sitting in some seats.

All seats face the stage so you can watch the show. There will be lots of other people sitting near you and it might be quite noisy. The curtains don't close during panto, so you can see the scenery.

There will be lots of people on stage, these people are actors. They will be wearing costumes and make-up.

When the show is going to start the lights will get a little darker. Some people will make some noise but this is OK. When the performance is going to start you will hear a voice asking everyone to turn off their mobile phones. This voice is coming through a speaker and it will be loud so everyone can hear it. If you haven't sat in your seat yet, you should sit down now.

The actors will come out onto the stage and the show will begin. There will be music and lights.

During the performance you will see the following characters on stage acting;

This is Nanny Nora Nightnurse

She is being played by Dan Smith. Dan is a boy but will be pretending to be a lady. Here he is in a dress and hat.



The Sheriff of Nottingham is played by Steve Giles.

Sometimes the Sheriff tries to trick people or can be mean to others, but they are fine.

Sometimes people watching like to shout "Boooo" at him when he's being tricky, you can too if you want to.



Robin Hood is played by Adam George Smith. Here he is in his green clothes.



Maid Marion will be played by Lydia Hall. Here she is in her purple dress.



Fairy Fern is played by Sophie Towns.



Harry Clarke plays three different roles, **Will Scarlett, Friar Tuck and Little John**. He'll change his costume several times to do this.



James Camp plays **Guy of Gisbourne**.



Much – The Millers Son is played by Brett Sinclair.

During the performance you might hear the actors make a joke. Some of the audience may laugh. You can laugh too if you like.

During the show you might see something that makes you feel sad. You can feel sad if you like, that's okay. The actors are only pretending to be sad or hurt, they are alright really.

If you would like to take some time out you can leave the seating to relax for a while.

If you need a bit of quiet time, there is a chill out space on the first floor just outside the theatre doors. This is near the upstairs toilets. This is what the upstairs table looks like.



There is also the Studio on the ground floor where you can go if you want to. There will be signs to show you where it is. This is what the room looks like.

In the Studio there will be mats on the floor for you to sit on, music playing and tables with books on for you to look at or colouring sheets to colour in. There will be some small toys in here too.



Sometimes, in parts of the story there might be some parts that make you feel scared or sad. Sometimes people are fighting or shouting at each other, but it's not real, it's the actors pretending. Sometime people around you might call out to the actors on stage... you can join in if you want to.

During the first half of the show, there's a part where two young children seem to be in danger, when they are in the woods. Don't be worried about this as they will both be fine.

Halfway through the show there is a break called an Interval. It will last about 20 minutes. The lights will back come on and you can go to the toilet or go and get an ice cream or drink. If you want you can stay in your seat.

After the interval you'll hear a voice telling everyone that the second part of the performance is about to begin. If you are not already in your seat you should go back to it and sit down.

In the second half there is a part where a dog which has three heads appears on the stage. This will make a loud roaring sound. Robin Hood and Fairy Fern will battle the dog. Robin and Fairy Fern will make sure that everyone is safe. The dog may come to the front of the stage but won't get off the stage or come near you. It's not real...there are actors inside the dog costume.



At the end of the show everyone will clap their hands to show the actors that they have enjoyed the show. You can clap your hands if you like. If the clapping is too loud you can cover your ears.

When the show has finished you can leave the theatre to go home. Everyone will start to leave the theatre at the same time so it can be busy. If you want you can stay in your seat until the crowd has gone and then leave the theatre.

You will leave the theatre the same way you came in, through the double doors. A Steward can show you the way if you are not sure.

We hope you will enjoy your visit and enjoy the Robin Hood show, If you have any problems or questions on the day, please ask one of the Duty Managers.



Here is a picture of Lawrence and Felicity and Nigel, who are working and can help you.

If you enjoyed yourself, please tell your friends and family, they might want to come next year. You can find us on Facebook and Twitter @coretheatresol

If you would like to suggest ways to improve our relaxed performance, or tell us if you liked it, please email or write to us on:

thecoretheatre@solihull.gov.uk

or write to:

The Core Theatre Solihull
Homer Road
Solihull
B91 3RG

Come back and see us at The Core Theatre Solihull soon!