

GUIDE TO THE RELAXED PERFORMANCE OF **Aladdin**

at The Core Theatre, Solihull

This guide is a visual resource for children and adults who may benefit from attending a relaxed performance when visiting the theatre. This resource is intended to help prepare any visitors for a new experience and to help them to become familiar with the surroundings.

Welcome to The Core Theatre in Solihull. This is a place for both children and adults to enjoy.



At the front there are 2 opening doors, suitable for wheelchair access; you will come through these doors into the wide foyer which has a purple floor. There could be lots of people when you come in, it can be noisy. There might be music playing.

You can collect your tickets from the Box Office counter. When collecting your tickets you may have to stand in line with other people and wait your turn.

Our Box Office person on the day will be Chloe.

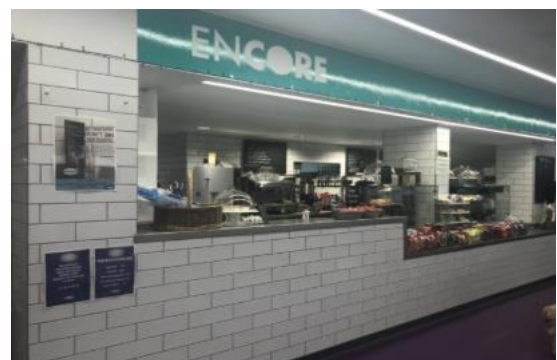
Sometimes there will be people selling toys and programmes in the foyer too.

You might hear some announcements over the speakers to tell you when the performance is about to start.

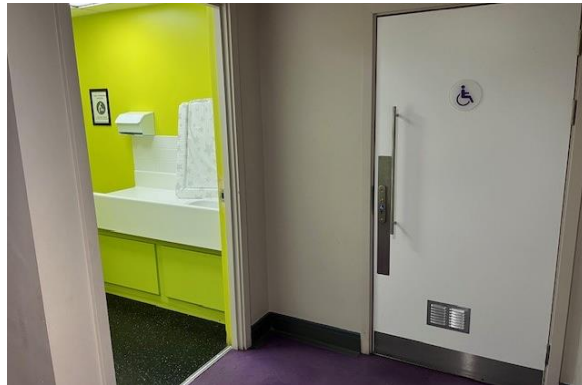
You may see some stewards wearing purple badges round their necks. Stewards are here to help you if you have any questions.

There is a café bar where you can buy drinks and sweets if you want them. It may be crowded and noisy as lots of adults and children will be excited to see the show.

The toilets are also down the corridor just near the bar. There are also toilets for wheelchairs and baby change. Just off the foyer there is



also a Changing Places facility. If you need to use this, you will probably already have a key for it or we can open it for you.



The changing places door is found just across the reception area near Connect.



Here is what the Changing places looks like inside.

Here is the main Theatre where you will go to see the show. It is a large room with a high ceiling and lots of seating. Wheelchair seating is on the front row.



The ground floor entrance to the theatre is near the cafe downstairs. Here are the doors. The booster seats are kept in this purple corridor and at the side of the stage, if you need one, you can choose one and take it to your seat to sit on.



The upstairs Theatre Doors for rows H-P are the central staircase, or you can go up in the lift if you like.

Here are the upstairs doors, you can find a booster seat just inside if you want one.



When you reach the entrance to the theatre, a steward will look at your ticket and tell you where your seat is. The lights will be slightly darker in the theatre than in the corridor and foyer.

Look at your ticket. You can see where you need to go.

The letters and numbers on your ticket tell you where to sit. You will see a letter at the end of each row and a number on the seat.



A steward can help you find the way. If you are uncomfortable with where you are sitting, speak to a steward and they will be able to help. You can show them where you would like to be.

If the seat that you would like to sit in is free and not reserved for anyone else, then you can sit there. If not, maybe you could choose another seat. We have made sure that there are lots available.

Here is the theatre from the front and looking from further back. There will be people sitting in some seats.



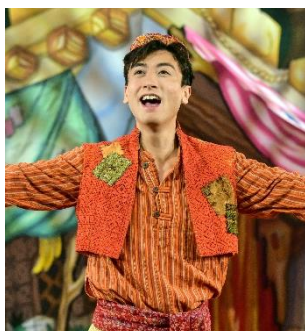
All seats face the stage so you can watch the show. There will be lots of other people sitting near you and it might be quite noisy. The curtains don't close during panto, so you can see the scenery.

There will be lots of people on stage, these people are actors. They will be wearing costumes and make-up.

When the show is going to start the lights will get a little darker. Some people might make some noise but this is OK. When the performance is going to start you will hear a voice asking everyone to turn off their mobile phones. This voice is coming through a speaker, and it will be loud so everyone can hear it. If you haven't sat in your seat yet, you should sit down now.

The actors will come out onto the stage and the show will begin. There will be music and lights.

During the performance you will see the following characters on stage acting:



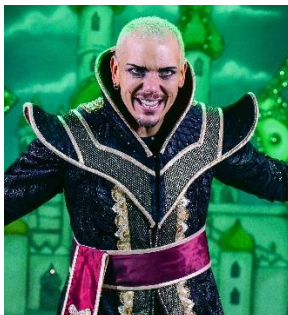
This is **Aladdin** played by Josh Liew. He is the hero of the story and he finds a magical lamp that grants wishes.



This is **Widow Twankey**, Aladdin's mum and the pantomime dame. She can be silly and make fun of herself and others sometimes but she is nice. She is a boy but pretends to be a lady when she's acting on stage – she does this by wearing girls' clothes. The actor's name is Morgan Philpott.



This is the **Genie**, played by Monique Salle. She appears when characters rub the magic lamp and she grants magic wishes. The actress also plays another magical character called Siri, the genie's sister. Siri wears a red costume.



This is **Abanazar**, played by Oli Brooks. He might try to trick others and he is mean to the other characters sometimes but he turns out okay in the end. Sometimes people watching might shout "Boo" at him, you can too if you want to.



This is **Princess Amirah**, played by Kat Chatterton. She is kind and wants to marry Aladdin even when he isn't a prince.



This is **Marmaduke the Monkey**, Aladdin's best friend.

Marmaduke might act sad sometimes and people watching might 'Awwww' at him, you can too if you want to. Marmaduke is played by Hannah Rose-Delahey. The actor is wearing a monkey mask and costume when she is on stage.

During the performance you might hear the actors make a joke. Some of the audience may laugh. You can laugh too if you like.

During the show you might see something that makes you feel sad. You can feel sad if you like, that's okay. The actors are only pretending to be sad or hurt, they are alright really.

If you would like to take some time out, you can leave the main theatre to relax for a while.

If you need a bit of quiet time, there is a chill out space on the first floor just outside the theatre doors. This is near the upstairs toilets. This is what the upstairs table looks like.



There is also the Studio on the ground floor where you can go if you want to. There will be signs to show you where it is. This is what the room looks like.

In the Studio there will be music playing low and tables with books on for you to look at or colouring sheets to colour in. There will be some small toys in here too.



Sometimes, in parts of the story there might be some parts that make you feel scared or sad. Sometimes people are being rude or shouting at each other, but it's not real, it's the actors pretending. Sometime people around you might call out to the actors on stage. You can join in if you want to.

During the show Abanazar may look mean to the others, don't worry about this, it's just part of the story.

Halfway through the show there is a break called an Interval. It will last about 20 minutes. The lights will back come on and you can go to the toilet or go and get an ice cream or drink. If you want, you can stay in your seat.

After the interval you'll hear a voice telling everyone that the second part of the performance is about to begin. If you are not already in your seat you should go back to it and sit down.

During the second half of the show, Aladdin will appear at the back of the theatre and walk down the stairs. When he gets back to the stage there will be a scene with the magic carpet where all the lights in the theatre will turn off and it will be completely dark for a little bit.

Later in the second half of the show, some of the actors will leave the stage and walk up and down the stairs in the theatre. You can wave or interact with them if you want to. During the chase scene Widow Twankey will spray some of the audience with a water gun.

At the end of the show everyone will clap their hands to show the actors that they have enjoyed the show. You can clap your hands if you like. If the clapping is too loud you can cover your ears.

When the show has finished you can leave the theatre to go home. Everyone will start to leave the theatre at the same time so it can be busy. If you want, you can stay in your seat until the crowd has gone and then leave the theatre.

You will leave the theatre the same way you came in, through the double doors. A steward can show you the way if you are not sure.

We hope you will enjoy your visit and enjoy the show too. If you have any problems or questions on the day, please ask one of the Duty Managers.

If you enjoyed yourself, please tell your friends and family, they might want to come next year. You can find us on Facebook and Instagram @coretheatresol

If you'd like to suggest ways to improve our relaxed performance, or tell us if you liked it, please email thecoretheatre@solihull.gov.uk

Come back and see us at The Core Theatre Solihull soon – we have family shows on in our Theatre and Studio all year round!

